



Philips
projection TV

43"

HD Ready

43PP7445



Turn up your viewing experience

with 1080i HD Ready TV

Prepare for a brighter future. High Definition-ready projection televisions from Philips deliver the new technologies of TV stylishly and affordably. So don't wait to bring the future into your living room.

Vivid, natural and razor sharp images

- HDTV Monitor for the highest quality display of HDTV signals
- 100Hz Digital Scan produces a stable, more relaxing picture
- Progressive Scan component video for optimized image quality
- Active Control optimizes picture quality whatever the source
- APAC compensates for premature aging from stationary images
- Scratch-resistant Saphlon Screen for reduced glare

Superb sound reproduction

- Virtual Dolby Surround for a cinema-like audio experience

Advanced connection to your audio/video products

- Component Video Input for top quality playback

PHILIPS
sense and simplicity

Specifications

Picture/Display

- Aspect ratio: 4:3
- Display technology: Projection TV, CRT, 7" liquid cooled
- Picture enhancement: Digital Crystal Clear, Progressive Scan, 100 Hz Digital Scan, Comb Filter Digital, Active Control, APAC, Color Temperature Adjustment, Digital Noise Reduction, Dynamic Contrast, Smart Picture
- Screen enhancement: Anti ageing circuit, Anti-Reflection, High Brightness, High Contrast, Saphlon Screen
- Viewing angle (H / V): 160 / 30 degree

Supported Display Resolution

Resolution	Refresh rate
480p	60Hz
576i	100Hz
1080i	60Hz

Sound

- Sound Enhancement: Auto Volume Leveller, Incredible Surround, Smart Sound, Treble and Bass Control
- Output power (RMS): 24W RMS (50Hz-10kHz at 5% THD)
- Bass enhancement: Bass Boost
- Speaker diameter: 4" x 6"
- Type: 2 Full Range Oval

Convenience

- Remote control type: BURC ZAPPA 19335 PTV
- Teletext: 100 page Smart Text
- Remote control: Standard, with Batteries
- Clock: Sleep Timer

- Child Protection: Child Lock
- User convenience: Auto Aspect Ratio Adaptation, Auto Picture Modes, Auto Program, Auto Sound Modes
- OSD Languages: English, Malay, Simplified Chinese

Tuner/Reception/Transmission

- TV system: NTSC, PAL B/G, PAL D/K, PAL I, SECAM B/G, SECAM D/K
- Aerial Input: 75 ohm coaxial (IEC75)
- Auto store

Connectivity

- AV 1: 480i 60Hz, 576i 50Hz, Audio L/R in, CVBS in, YPbPr
- AV 3: 480p 60Hz, 1080i 60Hz, Audio L/R in, RGB+H/V, YPbPr
- Output rear: Audio L/R out, CVBS monitor out
- Side: 480i 60Hz, 576i 50Hz, Audio L/R in, CVBS in, S-Video Y/C

Power

- Standby power consumption: < 1 W
- Mains power: 160-276V, 50-60Hz
- Complies with: Energy Star
- Consumption (On mode): 180W (Typical)

Dimensions

- Product dimensions (WxDxH): 96 cm x 53 cm x 115 cm
- Product weight: 57 kg
- Carton dimensions (WxDxH): 106 cm x 62 cm x 125 cm
- Weight incl. Packaging: 65 kg
- Temperature range (operation): 5°C to 40°C

Highlights

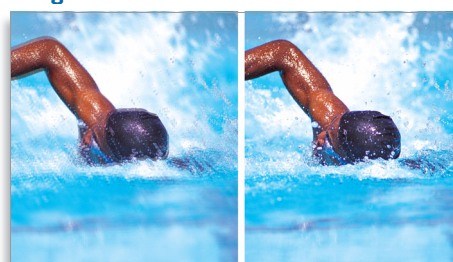
HDTV Monitor

HDTV is the latest and best television signal available. It produces picture quality more than twice that of traditional analog broadcasts. In order to effectively maximize the HDTV signal, a television must incorporate advanced signal input connectivity

100Hz Digital Scan

A conventional TV shows a picture by scanning 50 times per second (50Hz). This frequency can be detected by the human eye in the form of a flickering picture. 100Hz sets show a picture by scanning 100 times per second eliminating the field flickering. Philips' digital scan doubles the rate of line flicker, making it undetectable. The result is a more stable picture that is relaxing for your eye.

Progressive Scan



Progressive Scan doubles the vertical resolution of the image resulting in a noticeably sharper picture. Instead of sending a field comprising the odd lines to the screen first, followed by the field with the even lines, both fields are written at one time. A full image is created instantaneously, using the maximum resolution. At such a speed, your eye perceives a sharper picture with no line structure.

Active Control

Active Control ensure that noise and sharpness improvements are continuously made at a rate of 60 times per second. By continually adjusting picture setting over 3,000 times per minute, Active Control Plus ensures that the viewing experience is optimized.

APAC

Automatic Phosphor Aging Compensation (APAC) is a Philips technology that is designed to help reduce the chances of image retention on a television screen. It prolongs the life of your TV's tube.

Saphlon Screen

Saphlon is a screen coating technology that helps to prevent scratches or damage, while also improving the picture by allowing more light output and reducing glare. You enjoy a brighter picture, and your set looks better for longer.

Virtual Dolby Surround

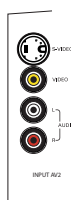
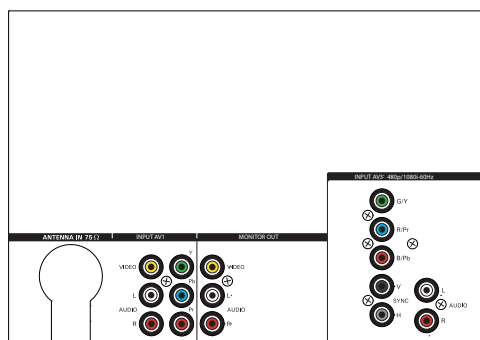
Virtual Dolby Surround is a processing technology for enhancing surround sound effects. It will create the sensation of Dolby Pro Logic without the necessity of additional rear speakers. You become totally immersed in your television experience.

Component Video Input (YPbPr)

Component Video is the highest quality interconnection standard for analog video. It is sharper than S-video and composite video.



stereo system					transmission system					
2CS BG	NICAM BG	2CS DK	NICAM DK	NICAM I	PAL BG	PAL DK	PAL I	SECAM BG	SECAM DK	NTSC M
•	•	•	•	•	•	•	•	•	•	•



Issue date 2009-07-31

Version: 1.0.10

12 NC: 8670 000 22089
EAN: 87 10895 87128 0

© 2009 Koninklijke Philips Electronics N.V.
All Rights reserved.

Specifications are subject to change without notice.
Trademarks are the property of Koninklijke Philips Electronics N.V. or their respective owners.

www.philips.com